

How to choose a water vapor fireplace?

contents

01

Types of water vapor fireplace

02

How should I choose

03

Product Comparison

— 01 —

Types of water vapor fireplace

01

Types of water vapor fireplace



- Water addition methods: automatic water addition, intelligent water replenishment
- Mode of operation: Touch screen、 remote control, Touch screen、 remote control、 tuya smart app
- Flame color: one color, Multiple colors
- Style: free standing ,inserts

01 Flame color

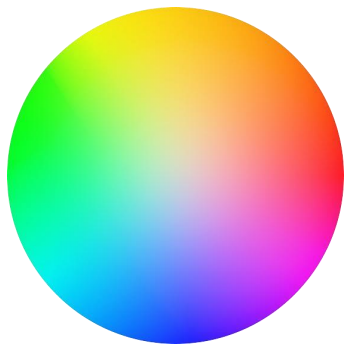
Function



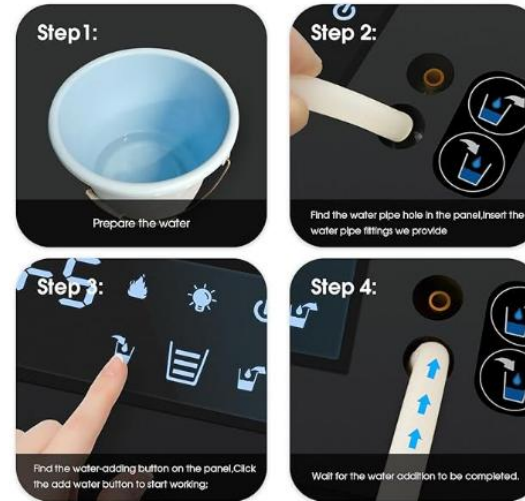
one color



Multiple colors



RGB Custom color (APP)



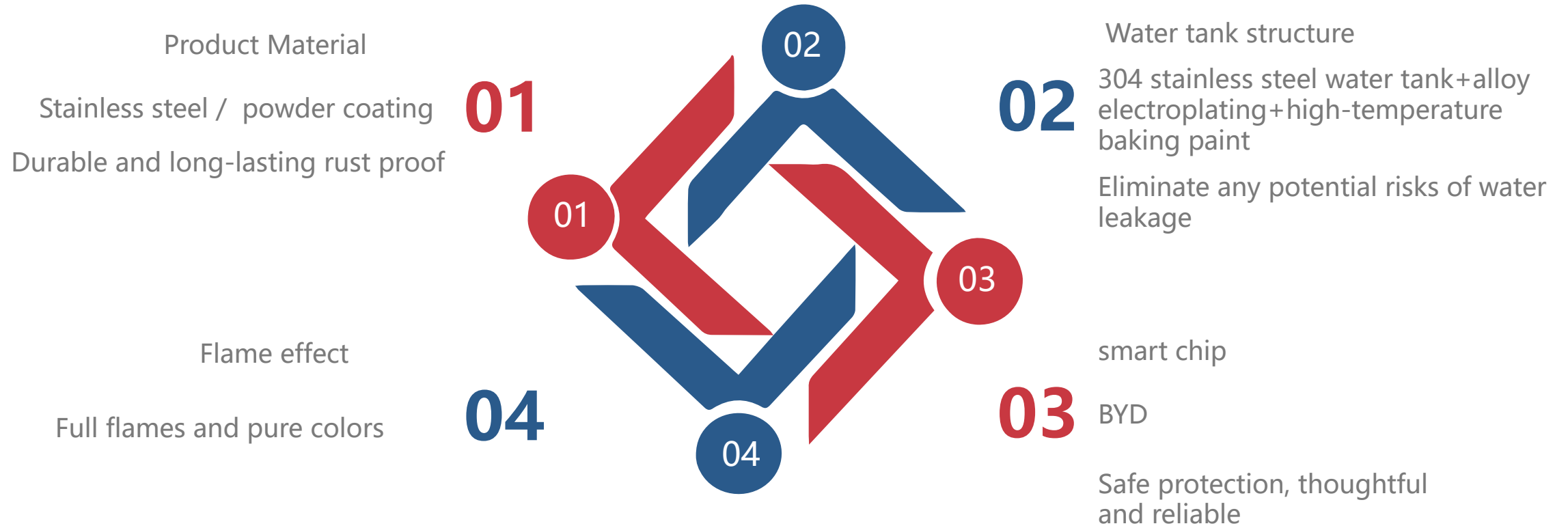
Electric water addition



with Water Connection Direct

— 02 —

How should I choose



Fireplace shell



1. Steel plate

The fireplace shell is made of stainless steel material, and the steel plate produced by cold rolling process has high strength and hardness, which is suitable for manufacturing components that require load-bearing or protection.

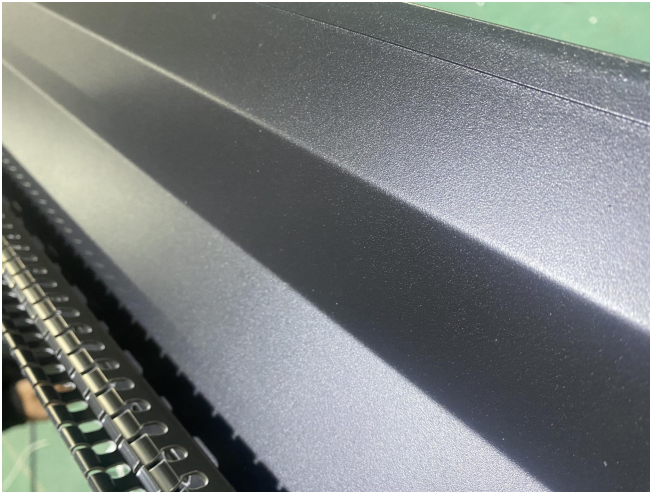
2. Electroplating

The chassis board has undergone electroplating treatment by depositing a thin and tight metal alloy coating on the metal surface to prevent direct contact between air and moisture and the steel plate, thereby delaying or preventing rusting of the steel plate and extending its service life.

3. High temperature baking paint

On the basis of completing electroplating rust prevention, the chassis also underwent high-temperature baking paint treatment. High temperature baking paint not only provides a wide range of color options to meet appearance requirements, but also has a good anti rust effect on the baking paint layer. After the paint film solidifies, a sealed protective layer can be formed on the surface of the steel plate, further blocking the external environment from corroding the steel plate, achieving dual anti-corrosion protection for the chassis steel plate. Therefore, this type of chassis fully considers anti-corrosion performance in materials and processes, ensuring long-term stable use of the chassis in various environments.

water tank

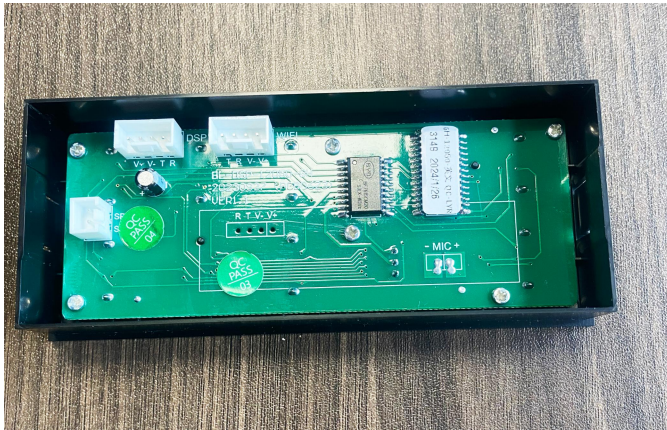


The fireplace water tank is made of 304 stainless steel material, which is widely used in food processing, kitchen equipment, medical equipment, and drinking water storage. It is highly favored for its excellent corrosion resistance and hygiene safety.

The main features of a 304 stainless steel water tank include:

1. Strong corrosion resistance: 304 stainless steel contains chromium and nickel, which give the material excellent corrosion resistance. Even if it comes into contact with water for a long time, it is not easy to rust or produce harmful substances.
2. Health and safety: 304 stainless steel material does not contain harmful heavy metal ions to the human body, meets food safety and hygiene standards, and can be used as a water tank to ensure that the water quality is not contaminated.
3. Long lifespan: The 304 stainless steel water tank has good weather resistance and wear resistance, with a long service life and low maintenance costs.
4. Easy to clean: The surface is smooth, not easy to accumulate dirt, and the cleaning and maintenance are relatively simple, which is conducive to maintaining the cleanliness of water quality.
5. Environmental protection and energy conservation: 304 stainless steel material can be recycled and reused, which conforms to the current environmental protection concept in society.

smart chip



The fireplace adopts BYD intelligent chips, which have strong technical support in intelligent control. As a well-known electric vehicle and battery manufacturer, BYD also has strong research and development capabilities in semiconductor technology. The application of its intelligent chips can bring the following advantages to fireplace products:

1. Intelligent control and energy-saving optimization: BYD's intelligent chip can achieve precise control of the working status of the fireplace, including temperature adjustment, fine adjustment of flame simulation effect, and energy consumption optimization, so that the fireplace can achieve the goal of high efficiency and energy saving while ensuring comfort.
2. Security guarantee: Through the real-time monitoring and protection functions of intelligent chips, the safety factor of fireplaces can be greatly improved, ensuring users' safety and worry free.
3. Interconnected interaction: A fireplace equipped with BYD's smart chip is likely to have networking capabilities, supporting linkage with smart home systems. Users can remotely control the fireplace through a mobile app to achieve an intelligent living experience.
4. Advanced design and reliability: As a well-known enterprise, BYD's chips focus on high performance, low power consumption, and stability in their product design, ensuring long-term stable operation of the fireplace and reducing maintenance costs.

Flame effect

The fireplace utilizes advanced atomization technology and lighting effects to successfully simulate the agility and realism of flame combustion. This fireplace decomposes water molecules into extremely small water mist particles through a built-in ultrasonic atomizer. The atomized water vapor is heated by PTC ceramics and continues to evaporate, forming a three-dimensional dynamic effect that is extremely close to real flames under specific light beams and mirror reflections.



flame color

The color of the fireplace flame has been professionally adjusted, and due to its use of high-precision LED light source technology, it can accurately simulate the natural color of the flame, from warm orange yellow to deep blue purple, all of which can be displayed vividly. Whether it is a monochromatic flame effect or a multi-color gradient, it can ensure the purity and vividness of colors, just like real flames dancing in the fireplace. In the design of the atomizing fireplace, the precise control of the light source and the combination of atomizing water vapor make the flame color and atomization effect seamlessly integrated, and the visual effect is particularly realistic. This pure flame color can also be personalized according to user preferences and application scenarios, meeting the aesthetic needs of different consumers for fireplace flame colors, further enhancing the value of fireplaces in home decoration and emotional attachment.



flame height

The flame height can be adjusted to 5-30 centimeters in 5 levels, suitable for different spaces and scenes.



Simplifying complexity is wisdom
The humanized design of the fireplace focuses on user experience (allowing users to adjust various settings of the fireplace intuitively and quickly), and is easy to operate.

Whether it's turning on/off, adjusting flame effects, or changing color modes, simply press a button to freely change the state of the fireplace, creating the desired home atmosphere and truly achieving "what you see is what you get".

This design not only simplifies the user's operation steps and improves the comfort of use, but also highlights the modern technology and intelligence level of fireplace products, making fireplaces a symbol of convenience and elegant lifestyle.

Easy to operate -
touch keys





Simplifying complexity is wisdom

The remote control for the fireplace is powerful and easy to operate. The remote control design has the characteristic of "what you see and what you get", which means that for each setting option, as long as the corresponding button is pressed, the fireplace will immediately respond and display the corresponding status, greatly improving the intuitiveness and accuracy of the user operation experience.

Users can easily and quickly operate the fireplace through remote control, such as opening/closing, flame adjustment, mode switching, etc. without the need for complex menu layers, simplifying the operation process and making fireplace control easier to understand. Even users who are not familiar with electronic products can easily control it. The design concept of the fireplace remote control is to provide users with a convenient, intuitive, and comfortable home experience.

Easy to operate -
remote control



Easy to operate -
APP

Simplifying complexity is wisdom

Users can remotely control and intelligently manage the atomizing fireplace through their smartphones. Specific functions may include but are not limited to:

1. Remote power on/off: Users can turn on or off the fireplace anytime and anywhere through the mobile app.
2. Flame effect adjustment: Adjust the brightness, color, and dynamic effects of the fireplace flame to create different atmospheres and visual enjoyment.
3. Scheduled reservation: Pre set the switch time and working mode of the fireplace, such as starting the fireplace at a scheduled time to prepare for going home in advance.

By controlling the atomizing fireplace through a mobile app, users can not only enjoy the convenience and comfort brought by high technology, but also customize the user experience of the fireplace according to personal preferences and lifestyle habits, making the fireplace a smart highlight in modern home life.



Detail Control - Optoelectronics

The fireplace uses LED beads instead of traditional halogen lamps

1. High energy efficiency: The luminous efficiency of LED beads is much higher than that of halogen lamps, which can convert more electrical energy into light energy rather than heat energy. Under the same brightness, LED beads have lower energy consumption and are more energy-efficient.
2. Long lifespan: The lifespan of LED bulbs is generally between tens of thousands to tens of thousands of hours, far exceeding the lifespan of ordinary halogen bulbs by several thousand hours.
3. Good safety: LED beads generate less heat, reducing the risk of fire, and do not contain harmful substances such as mercury, making them more environmentally friendly.
4. Rich colors: LED beads can provide a wider range of color temperatures and color choices, achieving RGB full-color effects and meeting more diverse lighting and decoration needs.
5. The fireplace lamp beads are sealed and glued for LED lighting in high humidity environments. After the colloid is completely cured, waterproof performance testing is carried out to ensure that the LED light strip can still work normally in a water immersed environment. Through adhesive waterproofing treatment, LED light strips can maintain good electrical insulation performance in harsh environments, prevent moisture and humidity from entering, extend the service life of the light strips, and ensure safety during use.

— 03 —

Product Comparison



Intelligent digital display panel

The humanized design of the fireplace focuses on user experience (allowing users to adjust various settings of the fireplace intuitively and quickly), and is easy to operate. Truly achieving 'what you see and what you gain'.



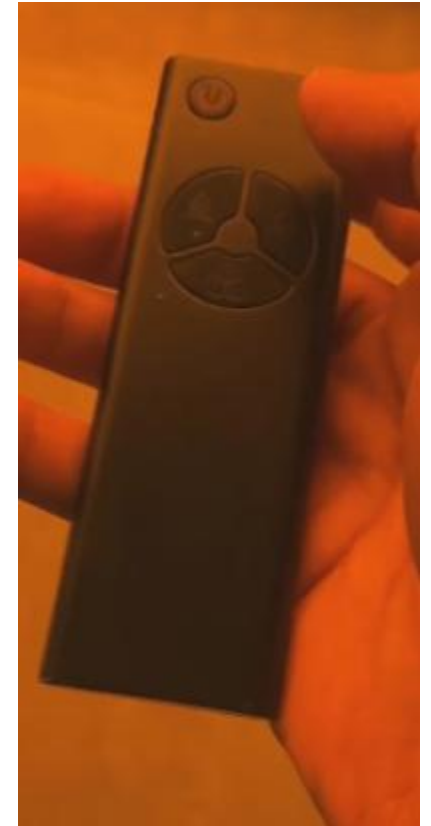
Traditional mechanical

The button functions are complex and cumbersome to operate, making it easy to make mistakes and lose the fun of use.



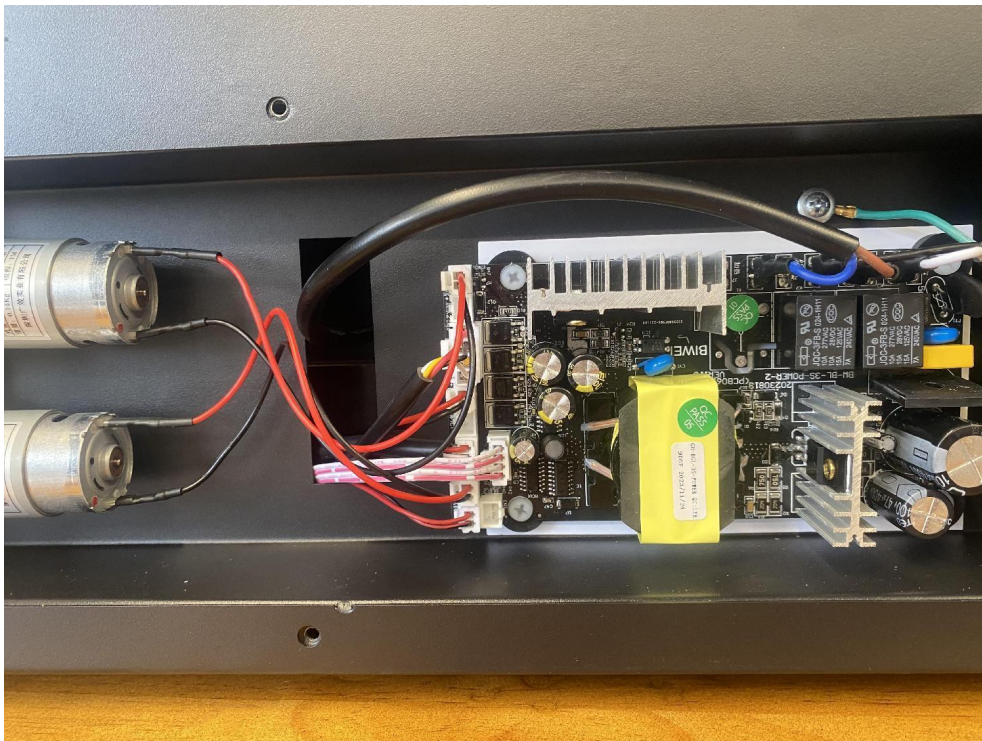
Visual remote control

The intuitive "what you see and what you get" human-computer interaction method allows users to operate without thinking about tedious steps, greatly enhancing the fun and smoothness of use.



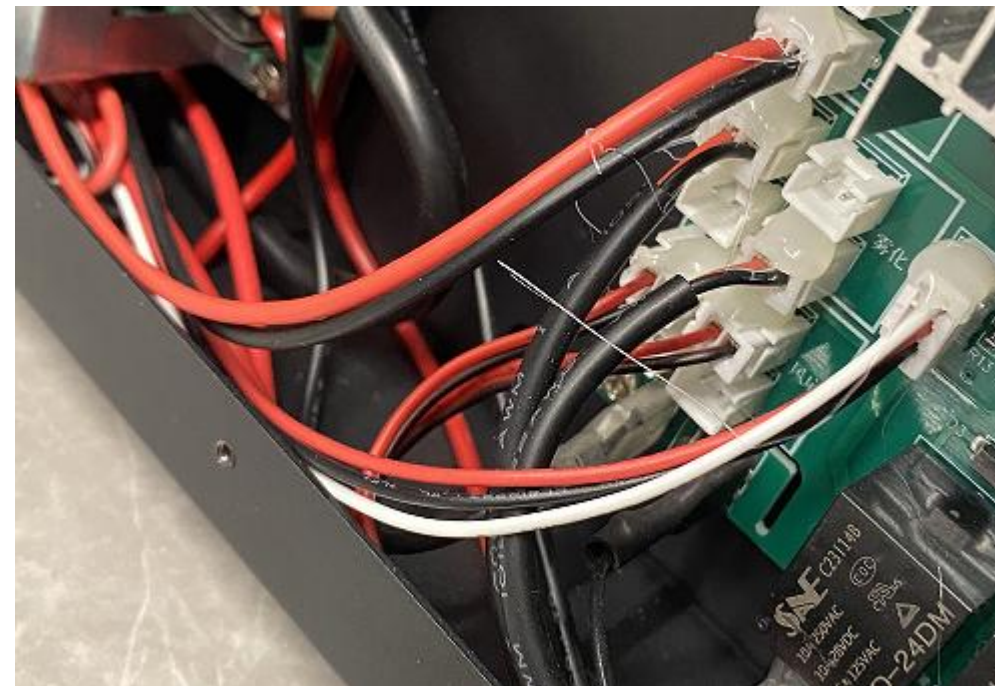
Complicated menu style remote control

The button functions are complex and cumbersome to operate, making it easy to make mistakes and lose exploration of the product.



Clear wiring and scientifically reasonable layout

The scientific and reasonable layout of fireplaces is the foundation for ensuring the safe, stable, and sustainable operation of products. Fully consider circuit heat dissipation, insulation, and avoidance of electromagnetic interference during design.



Internal wiring layout is chaotic

A typical small workshop produces products with a chaotic layout, which can easily cause safety hazards such as short circuits, electrical leakage, and electromagnetic interference.



Long service life of waterproof sealing

The fireplace uses LED instead of traditional halogen lamps, which has a long lifespan and low energy consumption. The LED light strip can maintain good electrical insulation performance in harsh environments, prevent moisture and dampness from entering, extend the service life of the light strip, and ensure safety during use.



Lamp beads are exposed and short circuited when exposed to water, which can easily cause malfunctions and irreversible damage.



Halogen lamps have high energy consumption and short lifespan, requiring regular replacement to gradually be replaced by LEDs.



Full, dynamic, and authentic flames

fireplace has conducted extensive and detailed research on the realism of "flames" and accumulated massive amounts of raw data, achieving the ultimate realism and naturalness in simulating flame effects.



Cannot be called a 'flame'

No flame effect at all



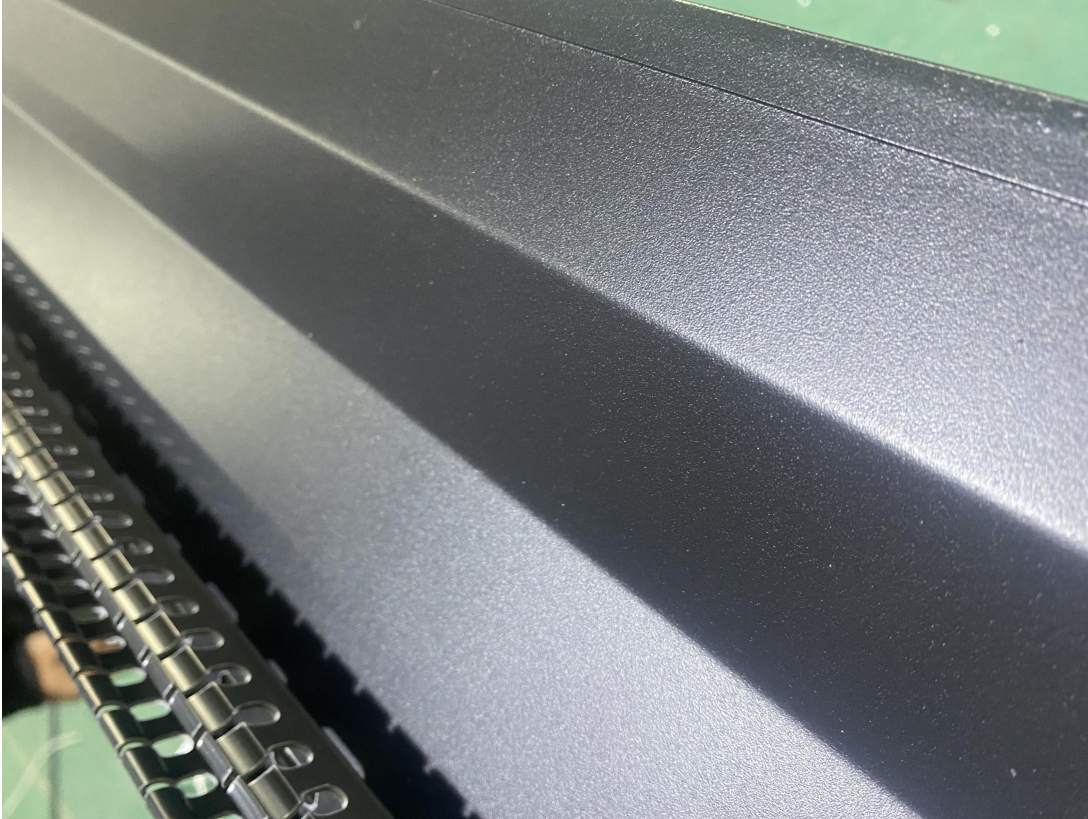
No ventilation structure, the flame remains full and rich in a sealed environment

fireplace features a unique panel air intake system and flame anti backflow suction structure. The fireplace is directly embedded in the furniture groove without damaging the original furniture structure, ensuring a layered and full flame.



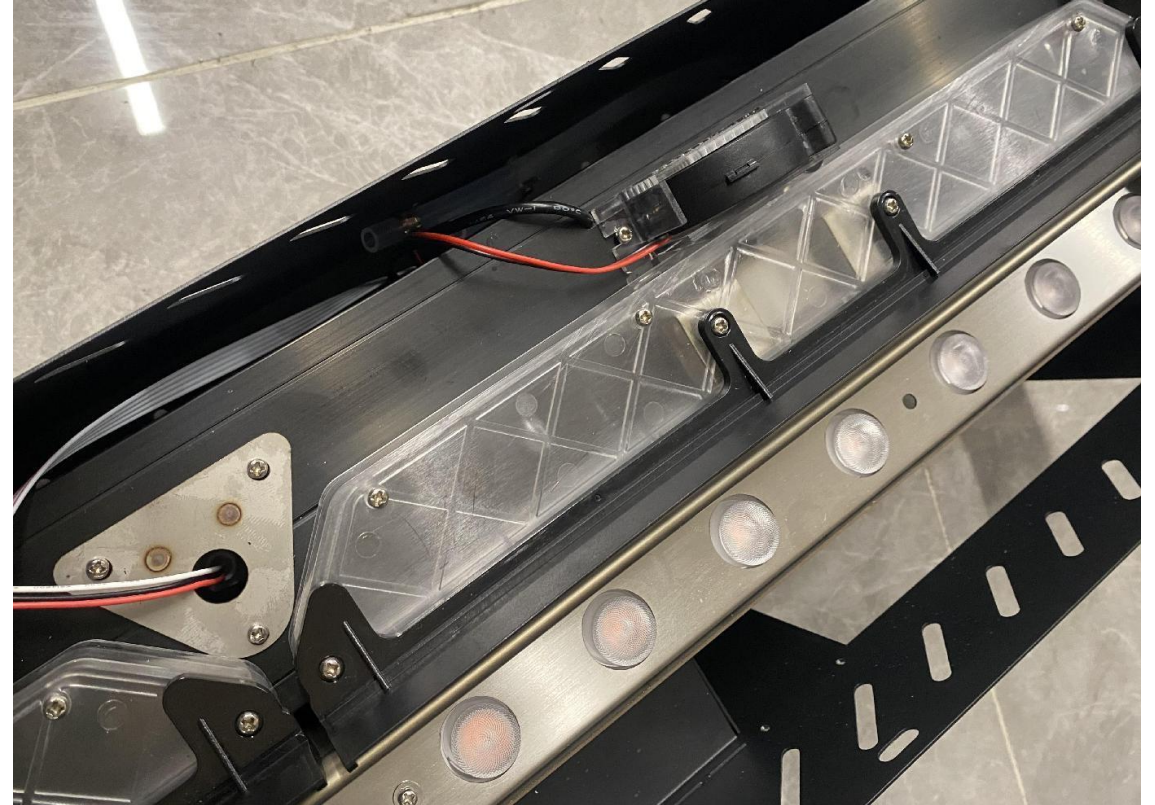
When furniture does not have air vents, flames flow back unevenly in height

When the fireplace is embedded in furniture, due to the furniture not having air vents, there may be severe uneven flame height during use, and in severe cases, there may be no flame at the flame mouth.



304 stainless steel water tank

The fireplace water tank is made of 304 stainless steel material. After welding, it undergoes double-layer rust prevention protection through electroplating and high-temperature baking paint to ensure your safety during use.



Self proclaimed: stainless steel material, stainless steel water tank

Black plastic water tanks, commonly used in the plastic industry, are recycled due to their low cost and fragility. Once the water tank ruptures, it can cause serious damage to furniture decoration.



Wooden crate packaging

The fireplace is packaged in a fumigation free wooden box, filled with pearl cotton for protection and anti drop protection, ensuring a tight fit between the fireplace and the box, without fear of global long-distance transportation. The box is equipped with metal buckles, and customs inspection does not require damage to the packaging.



Cardboard box+wooden frame

As shown in the picture, there are significant safety hazards in long-distance transportation, which can easily lead to unnecessary after-sales service.