

01 / Usage and warranty of atomized fireplace

About the atomization fireplace

Using atomization technology combined with special physical phenomena to create a realistic flame effect, an ultrasonic ion atomizer is built-in, and a blower is used to blow out water vapor. The light illuminates the water vapor to form the flame effect in front of us.

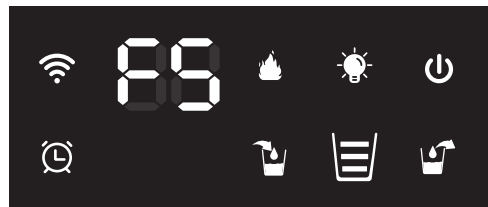
Installation and use of atomized fireplace

The 3D atomized fireplace is laid flat inside the groove, and sockets need to be reserved inside the groove.

Warning

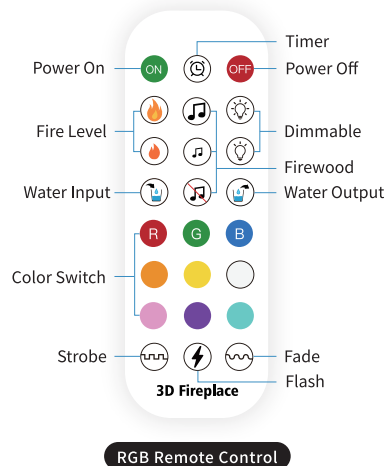
- 1 When adding water, it is necessary to have someone watching from the side to avoid water splashing out and damaging electrical components.
- 2 This product relies on an ultrasonic atomizer to produce flames. It is best to inject purified water or reverse osmosis water into the water tank. When used for a long time, the atomization plate is prone to cracking due to scale, which can seep into the atomizer and cause short circuit damage. Therefore, it is necessary to regularly clean the scale on the atomizer to prolong its service life.
- 3 If you need to move/move the machine, remember to first cut off the power, drain the water in the water tank, and then carefully test the temperature of the machine panel with your hands before moving/moving the machine.

02 / Panel



- Power
- Dimmable
- Fire Level
- Atomization Gear
- WIFI
- Water Output
- Volume State
- Water Input
- Timer

03 / Remote control



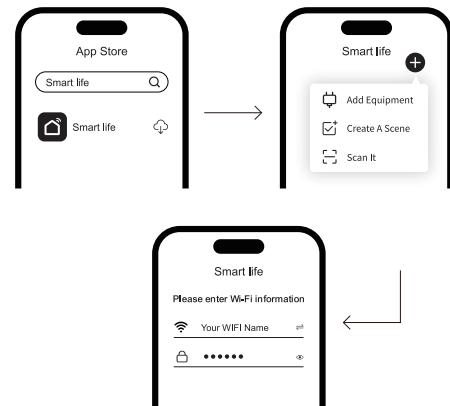
04 / Remote Control Pairing Instruction

- 1 Unplug the power cord of the fireplace and keep it in a power-off state.
- 2 Install the battery on the remote control and turn it on by pressing **ON** and **OFF** at the same time. Until the indicator light of remote control changes to flashing.
- 3 Power on fireplace to complete pairing.





05 / Optional mobile APP connection method

- 1 Download the "Smart life" APP;
- 2 Turn on the fireplace ; see the flashing signal, open Smart life APP to add equipment (upper right corner);
- 3 Click the found device to enter your WIFI name and password, wait for about 1 minute to add the device, click the bottom "completed";
- 4 Enter the operation interface to be controlled according to your needs.
- 5 After successfully connecting the fireplace, you can click on any color on the light spectrum to change it.







06 / Usage

Manual water addition

After plugging in the power supply, the voice prompt indicates that the water level is low. When adding water to the water tank  and hearing the voice prompt that the water has been fully filled, stop adding water. Remember not to continue adding water at this time, otherwise water overflow may cause the circuit. During use,  the water level will decrease and when it falls below half, a prompt will be given (if the water level is insufficient, please add water). This only needs to be filled up. If the water level is not added in time, it will be lost at the lowest point (if the water level is insufficient, shut down after 30 seconds). Simply fill up the water to make it work.

Intelligent water addition

When the machine is powered on and detects insufficient water level, the machine will automatically trigger a water filling action. It is necessary to manually connect the water pipe to the water inlet of the panel . If it is necessary to manually trigger the water addition, the button board  is the water addition key position (press and hold for three seconds to trigger the automatic water addition action); If manual triggering of drainage is required, the button board  is the drainage key position (press and hold for three seconds to trigger automatic drainage action).

 Real time display of water position: low water level, medium water level, high water level.

[The best effect is to use it for 15 minutes after starting up.]

07 / Warranty Description

Promise

- 1 All products sold by our factory have a warranty period of five years, with free maintenance during the warranty period (excluding wear and tear parts, faults or damages caused by human factors or uncontrollable natural phenomena).
- 2 After receiving the repair notice, solve the problem within seven working days (except for special circumstances).
- 3 Users can inquire about technical issues through after-sales mail and receive clear solutions.
- 4 In case of performance failure during normal use, our company promises the above warranty services. Unless otherwise specified in applicable national laws and regulations, our company will comply with relevant laws and regulations.
- 5 During the warranty period, paid repair services will be provided for the following situations:
 - (1) Damage caused by human or uncontrollable natural phenomena;
 - (2) Malfunction or damage caused by improper operation;
 - (3) Due to the modification of the product.

Atomized Fireplace Instruction

